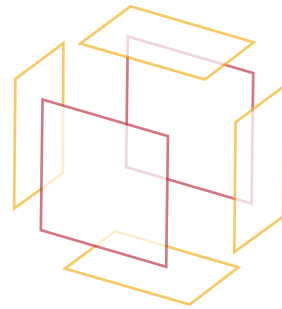




modDsys provides a full range service in both modular construction as well container conversions. Working out of our innovative 100,000 sqf facility modDsys caters to all aspects from A to Z all in house with seamless integration in the process line of production.

Priding itself on its flexibility and solution orientated nature, our systems and processes allows modDsys to deliver each project to the exact requirements of local codes, be it in USA, UK, EU, MENA, Australia or South east Asia.

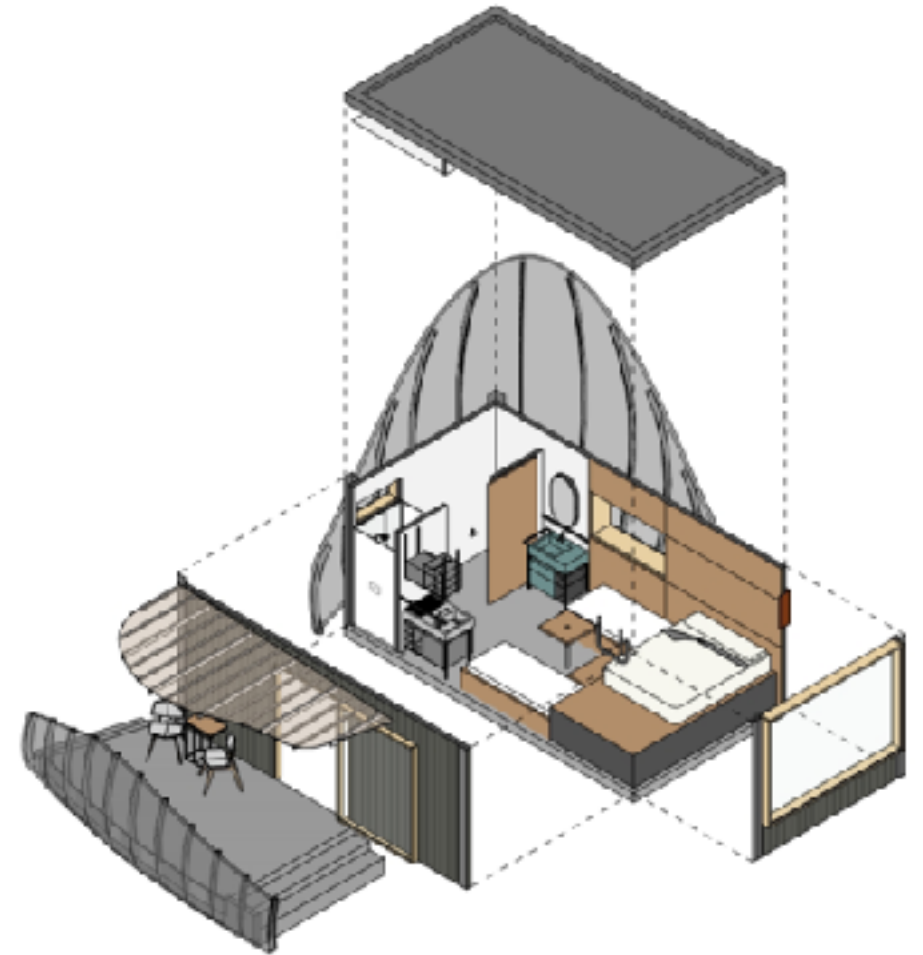


What is

moDular

Modular and Prefabrication has made leaps and bounds. Shifting many aspects of the construction away from the traditional onsite to offsite lean manufacturing process. Proving that in most cases modular can be done cheaper, quicker and in an eco-friendlier and more sustainable way compared to traditional construction. Not to mention debunking myths that assume modular construction is restrictive and lacks flexibility.

The two main differences between modular and traditional construction lies in the process. Where the latter is performed in a linear course and in a variable environment. Prefabrication work is performed in parallel approach inside a factory where it is protected from external variables. This process means that projects can be completed in much more efficient manner, at times construction can be reduced by 70%.

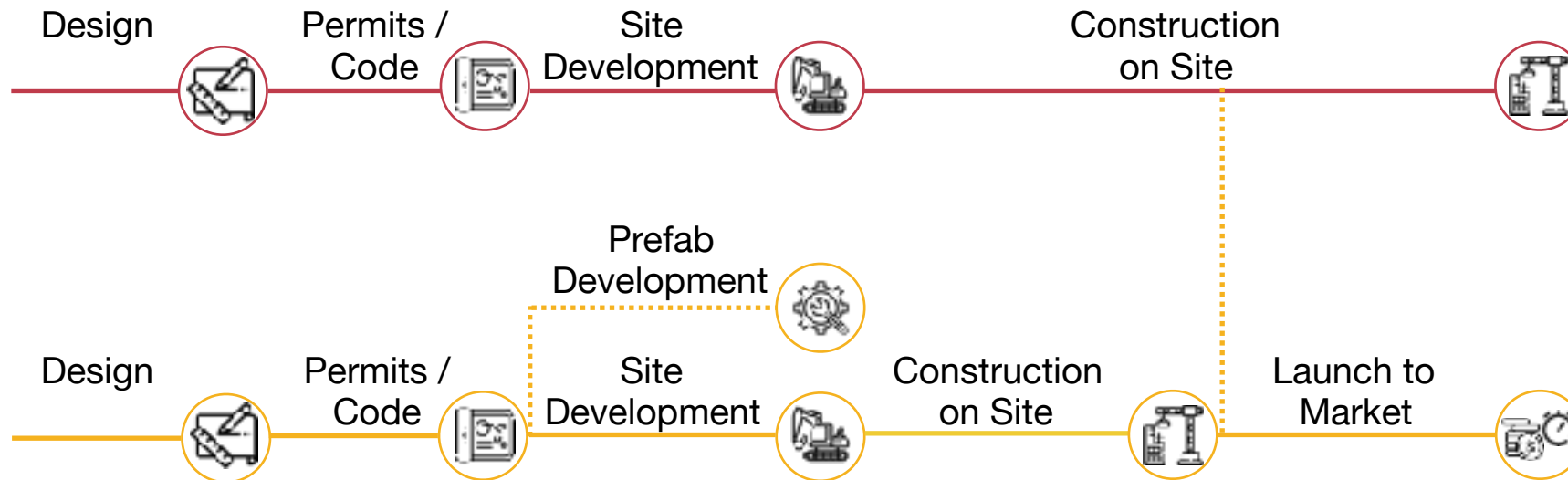


Why

moDular



Construction takes place in a safe and controlled environment. Operating much like a production line in a traditional factory. Here 70%-90% of the project is produced and completed before being transported to the site location. This can range from individual panels to complete turnkey solutions. This process allows for a quicker turnaround on projects, providing developers and contractors a quicker return on their investment.



Why

moDular



Quick Return on ROI

Up to 90% of the construction can be performed offsite in a controlled environment. This greatly reduces any risks and cause for delays. Because prefab is in a production line manner, this can reduce timelines by up to 70%. Thus, getting your project quicker to market



Cost Effective

Because modular is constructed through a production line, as well as simultaneous to other other aspects of the build. Economies of scale can flourish, greatly reducing costs



Minimal Impact to the business

Due to the fact that up to 90% of the project is completed away from the site, schools and businesses can continue running as normal with no interruptions



Flexibility

With an endless supply of options and solutions. ModDsys can cater to any situation



Quality

ModDsys' innovative and controlled facilities allow for increased quality control across all areas of the project



Sustainability

Prefab is constructed inside a controlled environment. Minimising waste and thoroughly reducing site disturbance and pollution

Who



modDsys Serves

modDsys is able to deliver solutions to a variety of sectors. Turning out projects to suit all needs and requirements.

Residential - Housing, villas, apartments, Lodges, additional dwelling units, residential buildings

Hospitality - Complete hotel pods, restaurants / cafes, resorts

Government - Schools, healthcare, prisons

Other - Bathroom pods, kitchen Pods, Mechanical / Electrical / Plumbing systems

Industrial - Mining, agriculture

Commercial - Storefronts, shopping malls



Module production

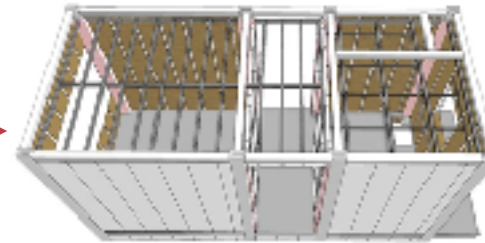
Step 1

- Steel Frame
- Concrete Slab



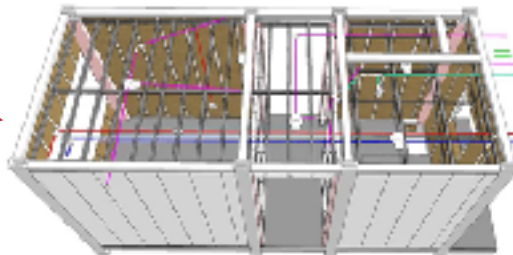
Step 2

- Water-Tight Interlocking Galvanised Steel Sheet
- Dry Wall & False Ceiling



Step 3

- MEP and Air-Con Installation



Step 4

- Internal Finishes Including: Flooring, Tiling, Cabinetry, Wares & Fittings
- Windows, Door Frames



Step 5

- Roof Decking



modDsys process A-Z



Feasibility

Assessment of all key elements of project, including

- Client requirements
- Project constraints
- Legal Frame work
- Financial allocations
- Traditional Vs Modular

Design

- Architectural design
- Structure & Modular Design
- MEP engineering
- Interior design
- Project planning & program

Planning

- Documentation for Authorities
- Coordination with AOR
- Mock-ups and MS

Production

- Procurement
- Production Development
- Inline Production programming
- QA/QC Reviews
- Packing & TOC (production)

Logistics

- All Documentation
- Shipping by Sea or Road
- Customs and Duties

Assembly on Site

- Site Mobilisation
- Traditional construction & MEP services
- Lift Core / Stair Core
- MODSÂ Placement
- Facade completion
- T&C & Hand over





*Reduce your risk, improve quality and be the first to market
with modDsys*